

September 2007 Issue

BIDS & PIECES

*LOYALTY TO YOUR COMPANY, JUSTICE TO
THOSE WITH WHOM YOU DEAL, FAITH IN
YOUR PROFESSION*

Calendar of Events

September 27, 2007—Dinner Meeting, Ola Josephs, “Going for the Gold in Effective Communications”

October 7, 2007—Golf Tournament

October 11, 2007—Satellite Seminar

October 25, 2007—Dinner Meeting, Renee Watson, Call to ISM San Antonio Membership to Volunteer”

November 15, 2007—Dinner Meeting, Gary Robert Smith, “Wind Turbin Power”

December 2007—No Meeting

January 24, 2008—Dinner Meeting, “Regulations Affecting International Transactions”

February 7, 2008—Satellite Seminar

February 28, Lunch/Dinner Meeting, Gregg Stocker, TBD

March, Buyer/Supplier Event, Date TBD

April 17, Satellite Seminar

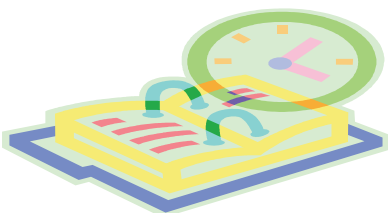
April, 24, Meeting, Time & Date TBD

May 22, Meeting, Time & Date TBD

PROGRAMS AND TIMES SUBJECT TO CHANGE

Check website often for updates at

www.ism-sanantonio.org



**institute for
supply management**

ISM—San Antonio, Inc.

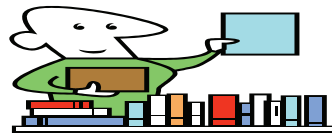


www.ism-sanantonio.org

OFFICERS

- President — Jim Rhodes, CPM
- 1st V.P.— Vickie Pasoquen
- 2nd V.P.— Magdalena Carvajal
- Secretary—Lynda Somers
- Treasurer—Rita Wenthold, CPA, CPM
- Membership Dir. —Beth Rairigh, CPM
- Events Dir.— Beverly Burnett
- Programs Chair—Bob Wolfe, CPM
- Marketing Dir.—Cynthia Hale-Sain
- Educ. Director—Dave Sanchez, CPM
- Awards Chair—Joe Leister, CPM
- Libraria—Theresa Hansmann
- Prof. Dev. Chair—Josh Rockhold, CPM
- Past President—Alyene Hanks
- Bylaws Chair— Walt Truet

Library (See Web Site for Book List)



Theresa Hansmann, Librarian
 (210) 637-3647
 e-mail: thansmann@rbfcu.org

TIP OF THE MONTH

Color code key Outlook messages to quickly identify e-mail from your most important contact such as clients, staff, your boss, or team members. This can be a huge timesaver and help to insure you don't miss key messages.

1. Highlight a message from a contact.
2. Choose **Tools>Organize**.
3. From the new window chose the option **Using Colors** (found at the left of the window).
4. Choose color to assign from the options presented and click **Apply Color**.
5. You can also **Show messages sent only to me** as a way to highlight messages that are not part of a group distribution.
6. Close the Organize window when you are done. All messages in your Inbox from the selected contact are now color coded

C.P.M. STUDY SESSION

A C.P.M. Review Program for those desiring an opportunity to qualify for the C.P.M. designation.

WHAT: Module II
 WHEN: Tuesday's
 TIME: 6:00 P.M to 8:00 P.M.
 WHERE: Clarke American Corporate Headquarters
 Knowledge Sharing Conference Room
 10931 Laureate Drive, San Antonio, TX
 POC: Dave Sanchez, C.P.M. 210-938-6715
 Rita Wenthold, C.P.A., C.P.M., 210-697-6224



Courses will be scheduled in five week sessions for each Module through October, 2007. Dave and Rita will be leading the reviews and interactive discussion of the subject content on tasks, skills, knowledge and abilities that are covered in each of the four exams. Materials needed can be ordered through ISM, www.ism.ws or by telephoning customer service 800-888-6276 ext. 401. ISM recommends that students order both the Study Guide and CPM Diagnostic Kit, plus any other recommended study resources.



19th Annual Golf Tournament

October 7, Pecan Valley Golf Club

Location: Pecan Valley Golf Club

Time: 11:30 p.m., Lunch & Registration

Shotgun Start: 1:00 p.m.

Format: Florida Scramble

Teams: Teams will be made up of 4 people

Cost: \$400 per team or \$100 per person



Pecan Valley is a historic golf course, centrally located; only six miles from downtown San Antonio and the Riverwalk. Pecan Valley was the site of the 50th Anniversary PGA Championship in 1968 and has also hosted three Texas Opens. It has been on Golf Digest's "Top 100 Public Courses" since 1984 and was selected to host the 2001 USGA Public Links Amateur Championship. Pecan Valley has been restored to its former glory with a complete renovation.

At Pecan Valley you can truly "Play Where Champions Have Left Their Footprints."

Contact **Lynda Somers** (Lynda.somers@harlandclark.com) 210-697-6101

SATELLITE SEMINAR

LOOKING AHEAD: 2007 & 2008 Satellite Seminar Series

October 11, 2007, Global Sourcing: Where in the world are Our Suppliers

February 07, 2008, Market Intelligence for Supply Professional

April 17, 2008, Supply Management's Role in Sustainability

Admission Fee: ISM Members: \$15.00 Non-members: \$35.00
(Includes light breakfast, lunch, and handout materials)

Location: Southwest Research Institute

6220 Culebra Rd.

San Antonio, TX

Time: 9:00 a.m.

Length of Program: 4 hours

There will be a 30-minute break after 2 hours

To register for this Satellite Seminar, go to web site

(www.ismswscf.org/sananto, download the registration form and fax to 210-690-6504 or contact

Joshua Rockhold, C.P.M.

@ 210-690-6503 (jrockhold@clarkeamerican.com)

Sponsored by: NAPM – San Antonio, Inc





Galveston, Texas
October 24-26,

Southwest
Supply Management Conference